

Ringlock Scaffolding System



Table of Content

Company Profile About Us, Global Presence, Certifications	01
Ringlock Components Standards, Ledgers, Braces, Transoms, Brackets, Girders, Decks	04
Allied Components Jacks, Base Collar, Ladder Coupler, Tie Rods, Tripod, Roofing Fittings	11
Fittings Spigot Pins, Rosette Clamp, Wedge & Twin Wedge Couplers	17
Forged Fittings Double, Swivel, Single, Sleeve, Girder Couplers, Board Clamp	23
Compliance ISO, EN, BS Standards, PASMA, Ladder Association	31

Company Profile

Building the Future with Safety, Strength & Innovation

Affix Scaffolding is a trusted name in the world of scaffolding and formwork solutions. With years of experience and a deep commitment to safety and quality, we specialize in designing, manufacturing, and supplying a wide range of scaffolding systems, formwork products, and access solutions for the construction and industrial sectors.

At Affix, we believe in creating solutions that are not only safe and efficient but also cost-effective. Our products are engineered to meet international safety standards and are rigorously tested to perform in the most demanding environments. Whether you're working on a residential building, high-rise tower, industrial plant, or infrastructure project — Affix Scaffolding is your reliable partner at every stage.

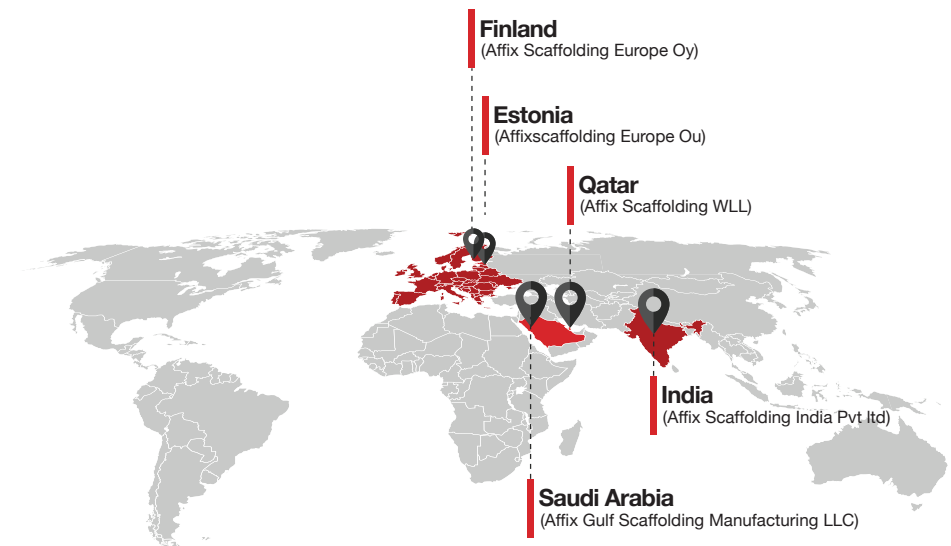


Our Global Presence

We are proud to have established a strong footprint across the globe. What started as a local venture has grown into a global brand serving clients across the Middle East, Europe & Asia. Our offices, distribution centers, and network of trusted partners allow us to deliver products and services quickly and efficiently — no matter where your project is located.

Our manufacturing operations are anchored by state-of-the-art factories located in India and Qatar, ensuring consistent quality and timely production. To streamline our global supply chain and meet the demands of diverse markets, we maintain strategically located warehouses in Saudi Arabia and Europe, allowing us to provide faster service and seamless logistics support.

With a strong global footprint and a reputation for excellence, Affix Scaffolding continues to expand its reach while upholding the highest standards in product quality and customer satisfaction.



Ringlock Scaffolding System

Ringlock features wedged ledger heads on ringlock ledgers and round rosettes with eight directions on ringlock standards. With safety access components like planks, trapdoor decks, access swing gates, and modular steel toe boards, Ringlock scaffolding is a high-load, flexible, and simple-to-assemble prefabricated steel or aluminum modular scaffolding system that offers effective and safe access for commercial, industrial, and bridging construction. Our Ringlock Scaffolding System complies with EN12811.

A fully hot-dipped, multipurpose steel scaffold for general access and vertical load support is the **AFFIX Ringlock Scaffolding System**. This kind of systems scaffolding or modular scaffolding is employed in various industrial settings. In the home, business, and industrial sectors, they are highly beneficial.

AFFIX uses Q235 & Q355 Grade Steel for all the components of Ringlock Scaffolding.

Physical Property

Density

7.85 g/cm3
(0.284 lb/in3)

Thermal Expansion

11.7 x 10-6 °C
(20-100°C)

Mechanical Property

Yield Strength

235

Tensile Strength

360-510 N/mm2

Hardness Vickers

110 - 154 Vickers - HV

Chemical Composition

Carbon

0.23 max

Silicon

--

Magnesium

1.5

Potassium

0.35

Sulphur

0.05

Iron

Balance

Standard Components of the Ringlock

Standard/ Vertical

These are the vertical members of the Ringlock system.

Intermediate Transom

These members help provide intermediate support for standard scaffold walk boards by spanning between the inner and outer ledgers.

Ledger/ Horizontal:

These are the horizontal members of the Ringlock system.

Diagonal Brace

The utility of this member is to provide transverse and longitudinal bracing to scaffold structures.

Features

Easy to assemble

Only a hammer is needed for ringlock scaffold erection, and all scaffolds are pre-measured.

Light weight

Made from premium steel with a thickness of 3.2 mm

Economical

Ringlock Scaffolding System comes with only three basic components so effectively economical compared to traditional scaffolding systems.

Fast

30%-50% faster assembly compared to the other traditional scaffolding systems.

Durable

Hot-Dip-Galvanized finish provides a low maintenance, long life.

Versatile

With up to eight connections in a single plane made possible by the innovative node point-rosette, the system scaffolding is extremely versatile for both straight and curved constructions, including petrochemical factories, power generating stations, and ship yards.

Safe

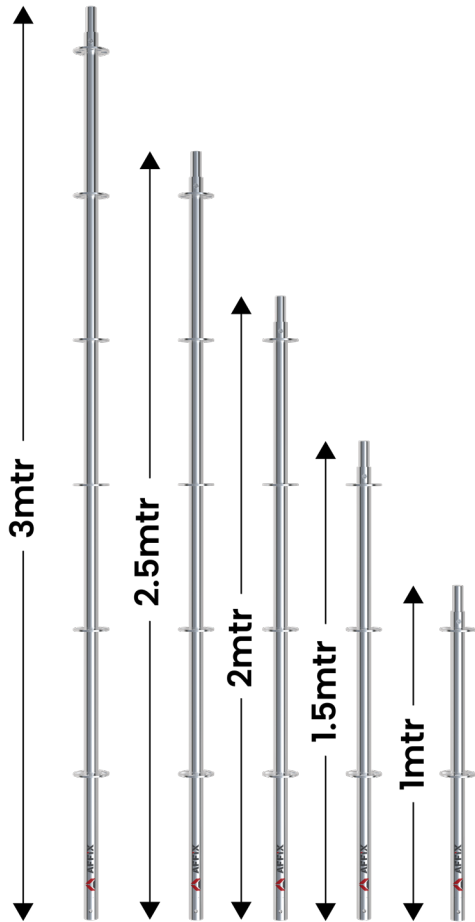
The Safe Working Loads on the platforms will vary between 0.75kN and 3kN per square metre depending on the configuration of the scaffold.

Ringlock Standard with Integrated Spigot

Model No. FRC01

- Fabricated out of 48.3mm OD x 3.2mm thick high grade steel tube Q235 /Q355.
- Ringlock standards act as vertical supports in modular scaffolding.
- These standards feature round rosettes at 500mm intervals, connecting to system parts like horizontals, braces, and brackets.
- Standard is fastened to this integrated spigot.

Code	Description	Size	Weight(KG)
FRC0105	Standard with Integrated Spigot 0.5 Mtr	OD 48.3mm X 3.2mm THK	3.09
FRC0110	Standard with Integrated Spigot 1.0 Mtr	OD 48.3mm X 3.2mm THK	5.52
FCC0115	Standard with Integrated Spigot 1.5 Mtr	OD 48.3mm X 3.2mm THK	7.95
FCC0120	Standard with Integrated Spigot 2.0 Mtr	OD 48.3mm X 3.2mm THK	10.38
FCC0125	Standard with Integrated Spigot 2.5 Mtr	OD 48.3mm X 3.2mm THK	12.80
FCC0130	Standard with Integrated Spigot 3.0 Mtr	OD 48.3mm X 3.2mm THK	15.23

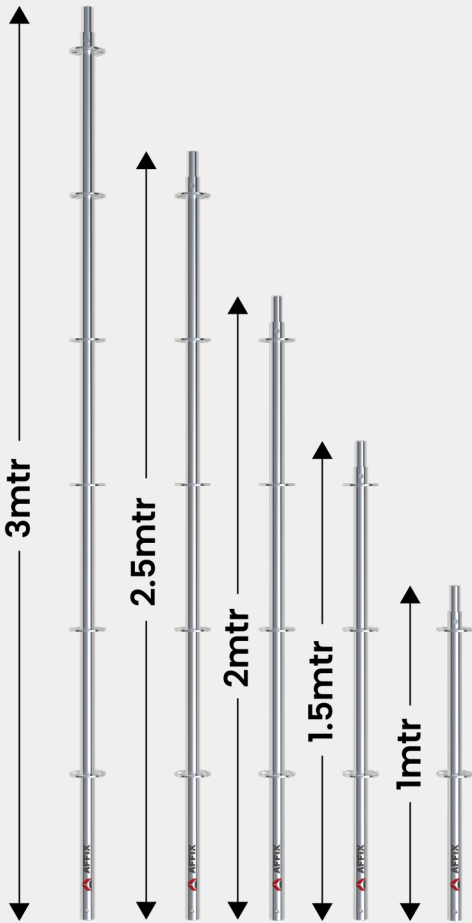


Ringlock Standard without Spigot

Model No. FRC02

- Fabricated out of 48.3mm OD x 3.2mm thick high grade steel tube Q235 /Q355.
- Ringlock standards act as vertical supports in modular scaffolding.
- These standards feature round rosettes at 500mm intervals, connecting to system parts like horizontals, braces, and brackets.
- Every Standard is joined vertically using a Spigot.

Code	Description	Size	Weight(KG)
FRC0205	Standard without Spigot 0.5 Mtr	OD 48.3mm X 3.2mm THK	2.90
FRC0210	Standard without Spigot 1.0 Mtr	OD 48.3mm X 3.2mm THK	5.32
FRC0215	Standard without Spigot 1.5 Mtr	OD 48.3mm X 3.2mm THK	7.75
FRC0220	Standard without Spigot 2.0 Mtr	OD 48.3mm X 3.2mm THK	10.18
FRC0225	Standard without Spigot 2.5 Mtr	OD 48.3mm X 3.2mm THK	12.60
FRC0230	Standard without Spigot 3.0 Mtr	OD 48.3mm X 3.2mm THK	15.03

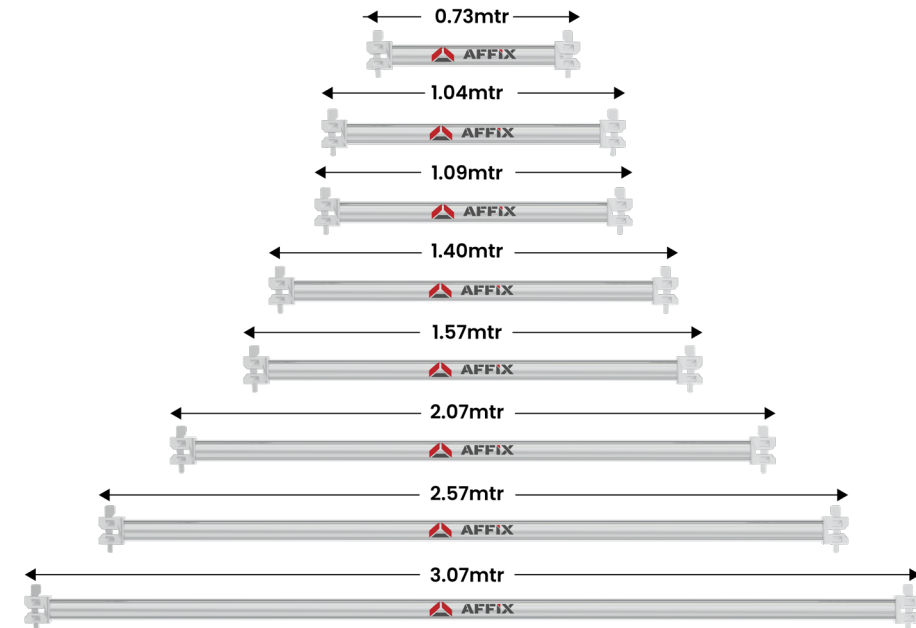


Ringlock O Ledger

Model No. FRC03

- Ledgers are used as the main horizontal connecting members for the Ringlock system.
- They consist of OD48.3mm scaffold tubes with cast steel ledger heads and wedge pins on both sides, which lock into the rosettes on ringlock scaffolding standards (uprights).
- These are available in various lengths to provide the desired grid specification for scaffolding or formwork.

Code	Description	Size	Weight(KG)
FRC03073	Ringlock O-Ledger 0.73 Mtr	OD 48.3mm X 3.2mm THK	3.42
FRC03104	Ringlock O-Ledger 1.04 Mtr	OD 48.3mm X 3.2mm THK	4.61
FRC03109	Ringlock O-Ledger 1.09 Mtr	OD 48.3mm X 3.2mm THK	4.80
FRC03140	Ringlock O-Ledger 1.40 Mtr	OD 48.3mm X 3.2mm THK	5.98
FRC03157	Ringlock O-Ledger 1.57 Mtr	OD 48.3mm X 3.2mm THK	6.62
FRC03207	Ringlock O-Ledger 2.07 Mtr	OD 48.3mm X 3.2mm THK	8.53
FRC03257	Ringlock O-Ledger 2.57 Mtr	OD 48.3mm X 3.2mm THK	10.44
FRC03307	Ringlock O-Ledger 3.07 Mtr	OD 48.3mm X 3.2mm THK	12.34



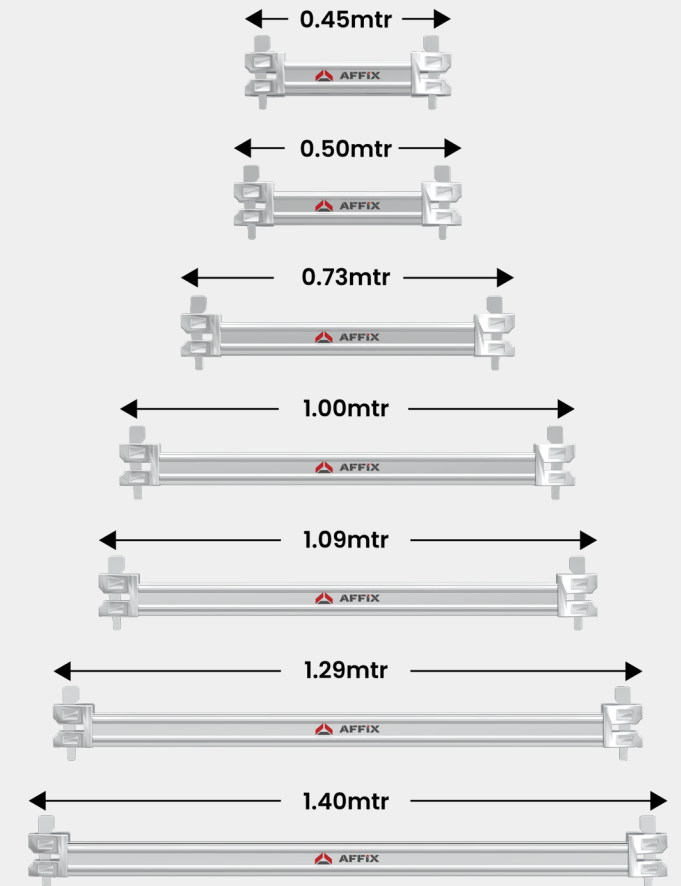
Ringlock U Ledger

Model No. FRC04

- The Ringlock scaffold A component of the European all-around scaffolding system are U-ledgers.
- Using Ringlock U ledgers make your work platform easier in construction scaffold assembly.

Code	Description	Weight(KG)
FRC04045	Ringlock U-Ledger 0.45 Mtr	2.1
FRC04050	Ringlock U-Ledger 0.50 Mtr	2.5
FRC04073	Ringlock U-Ledger 0.73 Mtr	3.1
FRC04100	Ringlock U-Ledger 1.00 Mtr	4.1
FRC04109	Ringlock U-Ledger 1.09 Mtr	4.3
FRC04129	Ringlock U-Ledger 1.29 Mtr	5.2
FRC04140	Ringlock U-Ledger 1.40 Mtr	5.4

The sizes in the table are conventional sizes; other sizes are available upon request.



Ringlock

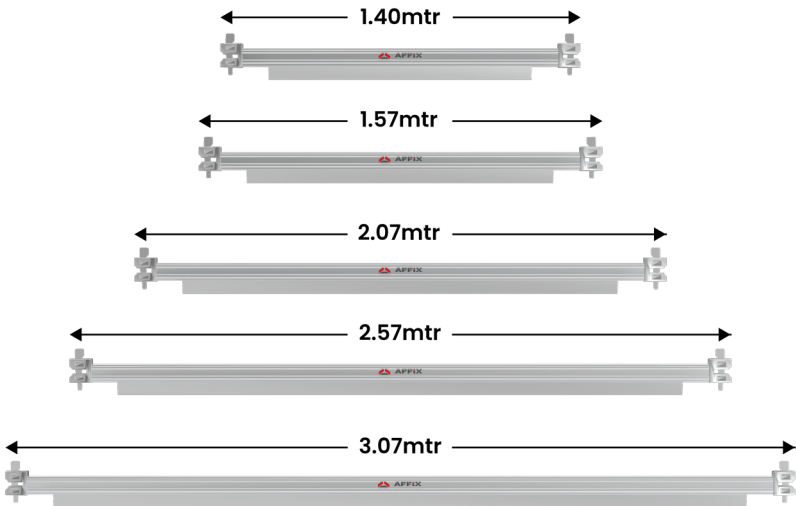
U Ledger Reinforced

Model No. FRC05

- Ringlock scaffolding for the all-around system includes U Ledger reinforced LW. It is similar to a ringlock U ledger, but it has additional support beneath the ribbed profiles of the U ledger.
- Two sets of wedge heads at either end, one reinforced steel profile welded beneath the ribbed U profile, and one ribbed steel U profile make up the composite U ledger reinforced LW.

Code	Description	Weight(KG)
FRC05140	Ringlock U-Ledger Reinforced 1.40 Mtr	9.00
FRC05157	Ringlock U-Ledger Reinforced 1.57 Mtr	9.50
FRC05207	Ringlock U-Ledger Reinforced 2.07 Mtr	12.50
FRC05257	Ringlock U-Ledger Reinforced 2.57 Mtr	15.60
FRC05307	Ringlock U-Ledger Reinforced 3.07 Mtr	19.00

The sizes in the table are conventional sizes; other sizes are available upon request.



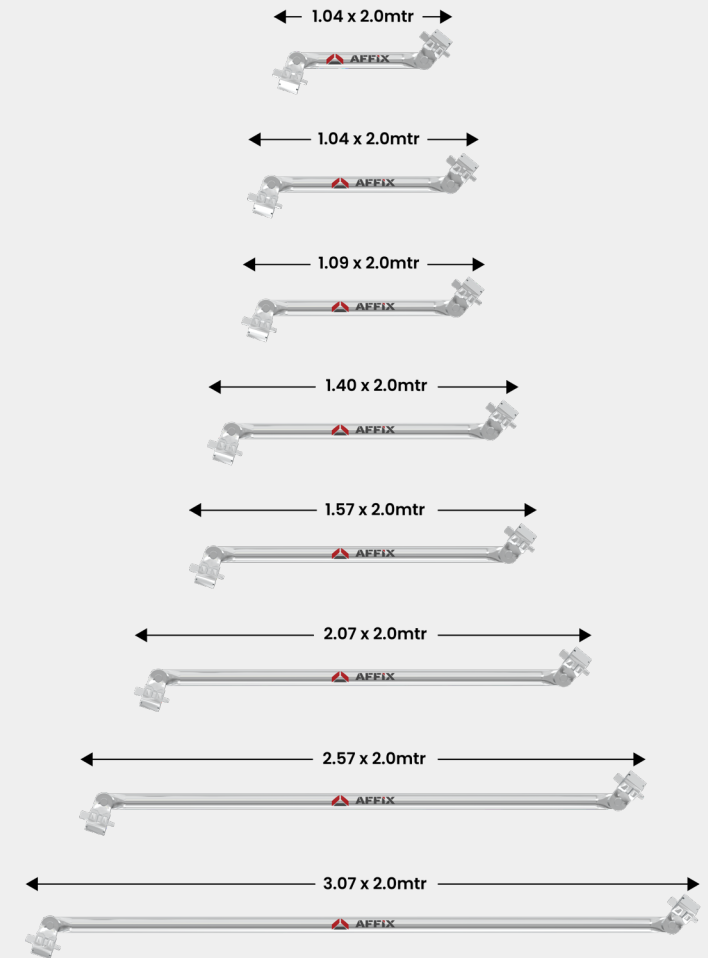
Ringlock Diagonal Braces

Model No. FRC06

- The ringlock scaffolding vertical diagonal brace stabilizes the tower bay.
- It features an OD48.3mm scaffold tube with two brace head and wedge pin sets.
- Brace sizes vary based on horizontal rungs and vertical rises.

Code	Description	Size	Weight(KG)
FRC06073	Ringlock Diagonal Braces 0.73 X 2.0 Mtr	OD 48.3mm X 2.5mm THK	8.09
FRC06104	Ringlock Diagonal Braces 1.04 X 2.0 Mtr	OD 48.3mm X 2.5mm THK	8.40
FRC06109	Ringlock Diagonal Braces 1.09 X 2.0 Mtr	OD 48.3mm X 2.5mm THK	8.47
FRC06140	Ringlock Diagonal Braces 1.40 X 2.0 Mtr	OD 48.3mm X 2.5mm THK	8.91
FRC06157	Ringlock Diagonal Braces 1.57 X 2.0 Mtr	OD 48.3mm X 2.5mm THK	9.20
FRC06207	Ringlock Diagonal Braces 2.07 X 2.0 Mtr	OD 48.3mm X 2.5mm THK	10.16
FRC06257	Ringlock Diagonal Braces 2.57 X 2.0 Mtr	OD 48.3mm X 2.5mm THK	11.28
FRC06307	Ringlock Diagonal Braces 3.07 X 2.0 Mtr	OD 48.3mm X 2.5mm THK	12.49

The sizes in the table are conventional sizes; other sizes are available upon request.



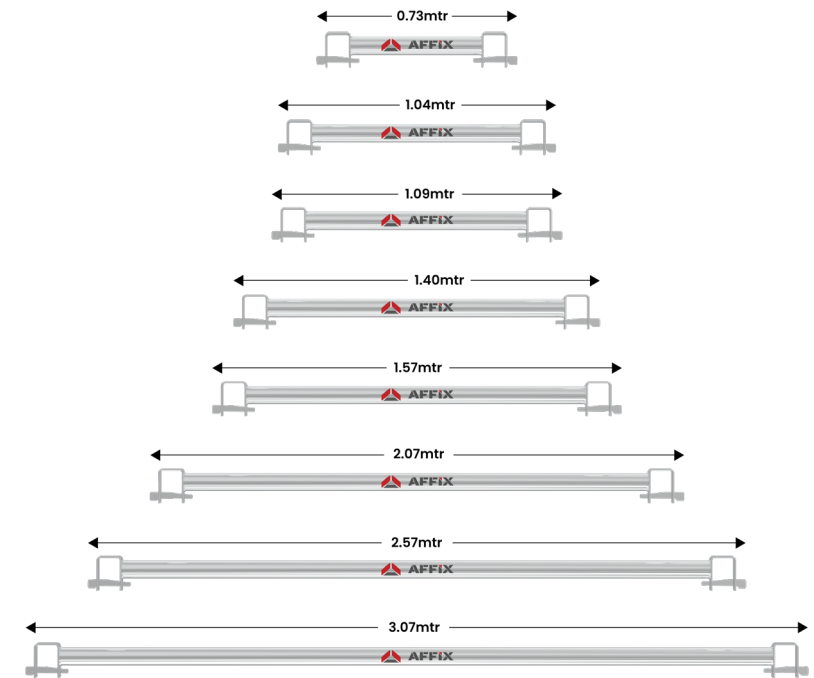
Ringlock Intermediate Transom

Model No. FRC07

- Transoms are manufactured from 48.3mm OD x 3.2mm thick scaffolding tube.
- Ringlock transoms provide intermediate support for scaffold planks positioned between ringlock ledgers.
- Transom provides mid-bay support for scaffolding boards by spanning between the inner and outer ledgers.

Code	Description	Size	Weight(KG)
FRC07073	Ringlock Intermediate Transom 0.73 Mtr	OD 48.3mm X 2.5mm THK	3.70
FRC07104	Ringlock Intermediate Transom 1.04 Mtr	OD 48.3mm X 2.5mm THK	4.35
FRC07109	Ringlock Intermediate Transom 1.09 Mtr	OD 48.3mm X 2.5mm THK	4.60
FRC07140	Ringlock Intermediate Transom 1.40 Mtr	OD 48.3mm X 2.5mm THK	6.70
FRC07157	Ringlock Intermediate Transom 1.57 Mtr	OD 48.3mm X 2.5mm THK	7.40
FRC07207	Ringlock Intermediate Transom 2.07 Mtr	OD 48.3mm X 2.5mm THK	10.30
FRC07257	Ringlock Intermediate Transom 2.57 Mtr	OD 48.3mm X 2.5mm THK	12.50
FRC07307	Ringlock Intermediate Transom 3.07 Mtr	OD 48.3mm X 2.5mm THK	15.00

The sizes in the table are conventional sizes; other sizes are available upon request.

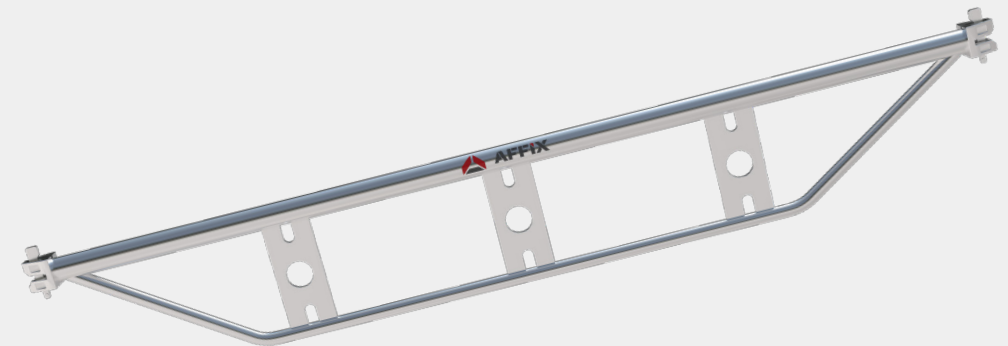


O-Bridge Ledger

Model No. FRC08

- Bridge ledgers of the Ringlock O type are horizontal, strengthened components.
- With ledger heads and wedge pins to join two ringlock verticals, it is constructed from an OD48.3mm scaffold tube.

Code	Description	Weight(KG)
FRC08109	O-Bridge Ledger 1.09 Mtr	5.90
FRC08770	O-Bridge Ledger 1.40 Mtr	7.70
FRC08870	O-Bridge Ledger 1.57 Mtr	8.70
FRC08114	O-Bridge Ledger 2.07 Mtr	11.40
FRC08257	O-Bridge Ledger 2.57 Mtr	14.30
FRC08307	O-Bridge Ledger 3.07 Mtr	17.00



U-Bridge Ledger

Model No. FRC09

- U-shaped steel profiles with ribs make up the U-type truss ledger.
- It is double horizontal scaffolding for the ring system.

Code	Description	Weight(KG)
FRC09109	U-Bridge Ledger 1.09 Mtr	6.00
FRC09140	U-Bridge Ledger 1.40 Mtr	7.50
FRC09157	U-Bridge Ledger 1.57 Mtr	9.40
FRC09207	U-Bridge Ledger 2.07 Mtr	11.70
FRC09257	U-Bridge Ledger 2.57 Mtr	14.50
FRC09307	U-Bridge Ledger 3.07 Mtr	18.10



O-Side Bracket

Model No. FRC10

- It is an addition to the ringlock scaffolding system, which is intended to increase reach by adding steel planks.
- It creates a platform that can be used to store building equipment when combined with steel planks.
- OD48mm scaffold tubes are used to make ringlock O-type brackets.

Code	Description	Size	Weight(KG)
FRC10032	O-side bracket 0.32 Mtr	OD 48.3mm X 3.2mm THK	1.71
FRC10040	O-side bracket 0.40 Mtr	OD 48.3mm X 3.2mm THK	4.71
FRC10061	O-side bracket 0.61 Mtr	OD 48.3mm X 3.2mm THK	5.90
FRC10065	O-side bracket 0.65 Mtr	OD 48.3mm X 3.2mm THK	6.10
FRC10074	O-side bracket 0.74 Mtr	OD 48.3mm X 3.2mm THK	6.59
FRC10088	O-side bracket 0.88 Mtr	OD 48.3mm X 3.2mm THK	7.45
FRC10092	O-side bracket 0.92 Mtr	OD 48.3mm X 3.2mm THK	8.56
FRC10100	O-side bracket 1.00 Mtr	OD 48.3mm X 3.2mm THK	9.04
FRC10107	O-side bracket 1.07 Mtr	OD 48.3mm X 3.2mm THK	9.33
FRC10115	O-side bracket 1.15 Mtr	OD 48.3mm X 3.2mm THK	10.42



U-Side Bracket

Model No. FRC11

- Scaffold side bracket is another name for the Ringlock scaffold console bracket. It works in tandem with ringlock verticals and is a part of scaffold work platforms.
- Special ribbed steel profiles are used as horizontal components in U-shaped ringlock scaffold console brackets.
- The ribbed U profiles keep the plank hooks from colliding during erection and divide the scaffold deck hooks that are installed from two sides.
- This greatly simplifies the process of building the ringlock scaffold.
- There are three sizes for the U-type ringlock console bracket:
 - 1) One Board Bracket
 - 2) Two Board Bracket
 - 3) Three Board Bracket



Lattice Girder

Model No. FRC12

- Lattice beams have parallel longitudinal tubes united by diagonal tubes which give a lattice effect.
- Lattice beams are highly versatile multipurpose scaffolding beams.
- All lattice beams are designed with top and bottom chords, and vertical filler bars with an external diameter of 48.3mm, making them suitable for connecting most standard scaffolding couplers.
- Lattice beam lengths ranging from 2-8m, and heights is 500mm.

Code	Description	Weight(KG)
FRC12213	Lattice Girder 2.13 Mtr X 0.50 Mtr	24.15
FRC12258	Lattice Girder 2.58 Mtr X 0.50 Mtr	28.20
FRC12305	Lattice Girder 3.05 Mtr X 0.50 Mtr	31.90
FRC12427	Lattice Girder 4.27 Mtr X 0.50 Mtr	45.24
FRC12488	Lattice Girder 4.88 Mtr X 0.50 Mtr	49.85
FRC12549	Lattice Girder 5.49 Mtr X 0.50 Mtr	56.00
FRC12610	Lattice Girder 6.10 Mtr X 0.50 Mtr	62.87
FRC12640	Lattice Girder 6.40 Mtr X 0.50 Mtr	63.35
FRC12854	Lattice Girder 8.54 Mtr X 0.50 Mtr	94.00

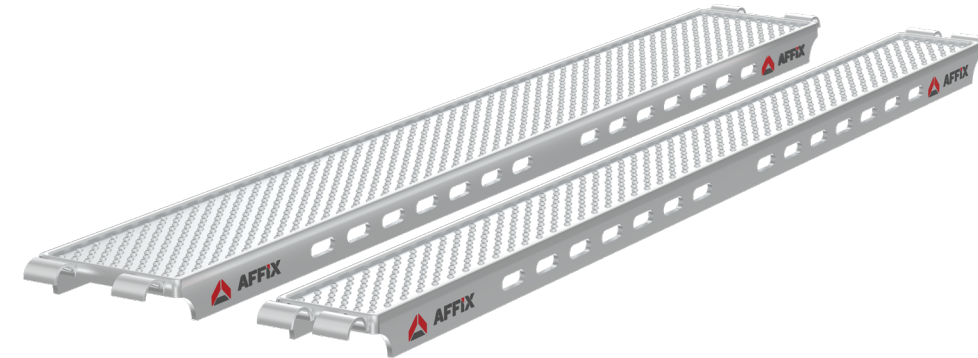


Decks (190mm & 320mm)

Model No. FRC13

- The Scaffold steel plank is an important part of the scaffolding. It is used as a walkway in the scaffolding.
- There are always plank hooks on both ends of the scaffold decks. In construction, the hooks are fastened to the horizontal ringlock scaffolding components (ledgers, transoms, and brackets).
- To prevent scaffold boards from rising during construction, you can use the lift-off preventers joint with ringlock U ledgers.
- The steel planks come with stamping holes, designed to resist skidding for workers.
- If required, customized sizes for steel planks can be easily made available as per provided specifications.
- The Steel planks comply with EN 12811 & EN1004.

Code	Description	Thickness(mm)	Size
FRC13073	Steel Decks	1.5mm, 1.8mm & 2mm	190mm,320mm X 0.73 m
FRC13109	Steel Decks	1.5mm, 1.8mm & 2mm	190mm,320mm X 1.09 m
FRC13129	Steel Decks	1.5mm, 1.8mm & 2mm	190mm,320mm X 1.29 m
FRC13140	Steel Decks	1.5mm, 1.8mm & 2mm	190mm,320mm X 1.40 m
FRC13157	Steel Decks	1.5mm, 1.8mm & 2mm	190mm,320mm X 1.57 m
FRC13207	Steel Decks	1.5mm, 1.8mm & 2mm	190mm,320mm X 2.07 m
FRC13257	Steel Decks	1.5mm, 1.8mm & 2mm	190mm,320mm X 2.57 m
FRC13307	Steel Decks	1.5mm, 1.8mm & 2mm	190mm,320mm X 3.07 m



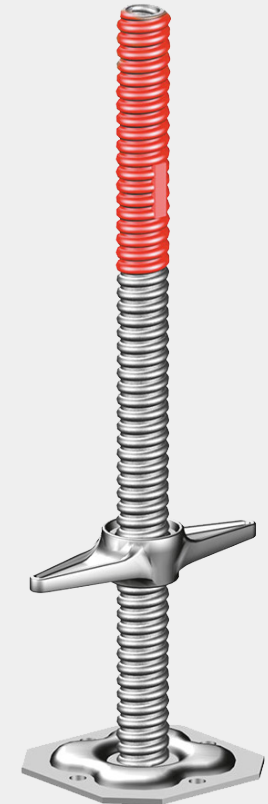
Note: O Type & U Type both available.

Adjustable Base Jack

Model No. FCF02

- The Adjustable Base Jacks are made of steel plate and screw jack.
- These fittings are available in two types (Hollow and solid).
- These Jacks provide a method of adjustment for Cuplock structure. It fits directly into the Cuplock Standard.
- The base plate at the bottom provides stability to the structure.
- The adjustable threaded pipe is made of 4mm thick steel pipe with 38mm OD.
- The adjustable threaded pipe has a nut restraint for adjustment and also to ensure the stem always has a minimum engagement inside the standard of upto 150mm.
- The adjustable base jacks provide 500mm of thread adjustment.

Code	Description	Size (mm)	Weight(KG)
FCF02670H	Adjustable Base Jack Hollow	OD 38/4mm X 670mm	3.54
FCF02760H	Adjustable Base Jack Hollow	OD 38/4mm X 760mm	3.85
FCF02860H	Adjustable Base Jack Hollow	OD 38/4mm X 860mm	4.20
FCF02670S	Adjustable Base Jack Solid	OD 36mm X 670mm	6.00
FCF02760S	Adjustable Base Jack Solid	OD 36mm X 760mm	6.65
FCF02860S	Adjustable Base Jack Solid	OD 36mm X 860mm	7.36



Adjustable U Head Jack

Model No. FCF03

- Adjustable U-Head Jacks are made of a “U” shaped steel plate, screw jack.
- These fittings are available in two types (Hollow and solid)
- Adjustable U-Head Jacks are used to provide support for primary beams (traditional timber, steel, H20 beam and aluminum beams).
- Adjustable U-Head Jacks are inserted into the top of the Cuplock standards.
- U Head Screw Jack is a scaffold product that is also used to support the scaffolding structure.
- These are fabricated out of high-grade alloy steel and available in different sizes.

Code	Description	Size (mm)	Weight(KG)
FCF03670H	Adjustable U Head Jack Hollow	OD 38/4mm X 670mm	5.05
FCF03760H	Adjustable U Head Jack Hollow	OD 38/4mm X 760mm	5.82
FCF03860H	Adjustable U Head Jack Hollow	OD 38/4mm X 860mm	6.58
FCF03670S	Adjustable U Head Jack Solid	OD 36mm X 670mm	7.45
FCF03760S	Adjustable U Head Jack Solid	OD 36mm X 760mm	8.15
FCF03860S	Adjustable U Head Jack Solid	OD 36mm X 860mm	8.86

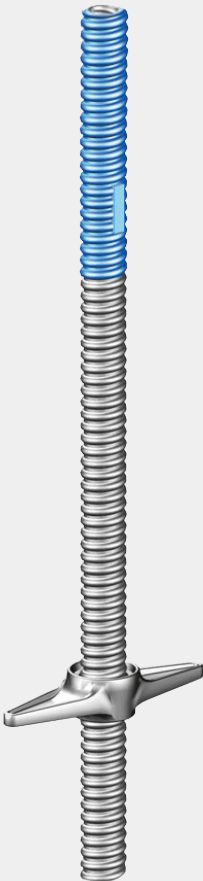


Adjustable Universal Jack

Model No. FCF04

- Adjustable Universal Jacks are made of a screw jack.
- These are available in two types (Hollow and solid)
- Adjustable Universal Jacks are inserted into the top of the Cuplock standards.
- Adjustable Universal Jacks are a method of adjustment of Cuplock structure by the socket base.
- The Universal Jack has an adjustment of approximately 0.5m and is used for both access and support structures to accommodate variations in ground levels.
- For support, the load bearing capacity is of up to 74kN.

Code	Description	Size (mm)	Weight(KG)
FCF04670H	Adjustable Universal Jack Hollow	OD 38/4mm X 670mm	2.00
FCF04760H	Adjustable Universal Jack Hollow	OD 38/4mm X 760mm	2.25
FCF04860H	Adjustable Universal Jack Hollow	OD 38/4mm X 860mm	2.50
FCF04670S	Adjustable Universal Jack Solid	OD 36mm X 670mm	5.25
FCF04760S	Adjustable Universal Jack Solid	OD 36mm X 760mm	5.85
FCF04860S	Adjustable Universal Jack Solid	OD 36mm X 860mm	6.55

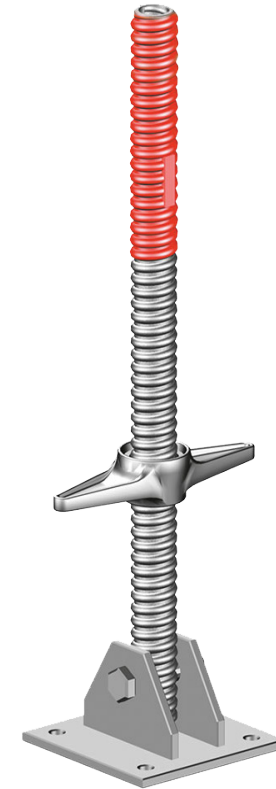


Swivel Adjustable Base Jack

Model No. FCF05

- Swivel Base Jack is a special type of Adjustable screw jack.
- This leveling jack has a swivel base plate, which makes it a great option to use on sloped surfaces.
- Adjustable Swivel Base Jacks are available in two types (Hollow and solid).
- Our Adjustable Base Jacks confirm to **BS 1139, EN 74**.

Code	Description	Size (mm)	Weight(KG)
FCF05670H	Swivel Base Jack Hollow	OD 38/4mm X 670mm	4.54
FCF05760H	Swivel Base Jack Hollow	OD 38/4mm X 760mm	4.85
FCF05860H	Swivel Base Jack Hollow	OD 38/4mm X 860mm	5.20
FCF05670S	Swivel Base Jack Solid	OD 36mm X 670mm	7.00
FCF05760S	Swivel Base Jack Solid	OD 36mm X 760mm	7.65
FCF05860S	Swivel Base Jack Solid	OD 36mm X 860mm	8.36



Fork U-Head Jack

Model No. FCF06

- The adjustable fork head can be inserted into the top of the standard.
- This fitting has a U-Head on top of the adjustable jack.
- This jack is used to support slab formwork and beam formwork in concrete shuttering.
- It is versatile with all formwork beams like wooden beam, aluminum beams and steel beams.



Base Plate

Model No. FCF07

- Scaffold Base Plate is a foot plate for scaffold systems used with Cuplock Scaffolding, Ring-lock Scaffolding, Kwikstage Scaffolding, Frame Scaffolding and Tube & Clamp Scaffolding.
- There are two types of Base Plate: Spigot Base Plate and Socket Base Plate.
- Spigot Base Plate is used to be inserted into the bottom end of the Standard
- Socket Base Plate has a socket where-in the bottom end of the Standard gets inserted
- It also provides a base for the universal jack & also connects the universal jack to drophead.
- Base Plate is also used as support for Cuplock structure in case no height adjustment needed.
- Our Base Plate complies to **EN 74** Standard.
- Base Plate is made of MS plate 150mm x 150mm x 5mm thk, and the spigot is of OD 38mm/3mm thk.



AFFIX manufactures Forged Fittings which confirm to European Standard **EN 74B** and are tested to ensure the highest quality. These Fittings are electroplated for a longer life span. We also manufacture Pressed Scaffolding Fittings.

Double Coupler

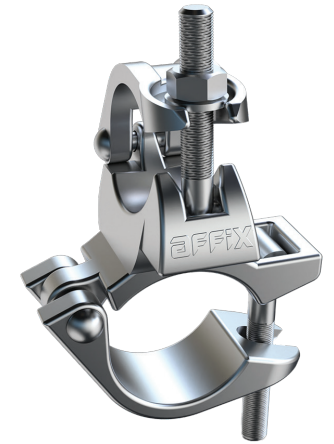
Model No. FCF08

A fixed ninety-degree, rigid coupler by Affix, used for connecting two 48.3mm tubes at right angles. This heavy duty fitting is designed for use in all types of scaffolding construction and also in lighting rigs, staging and guard rails.

All the drop forged scaffold fittings are zinc plated for longer life, manufactured to **BS 1139 (Part 2) & EN 74** and are tested to ensure the highest level of quality control. Our drop forged doubles are Class B.

This fitting is also available as a pressed steel fitting.

Suitable Pipe	48.3mm OD
Standards	EN74-B
Weight	1.011 Kg
Finishing	Zinc Plated



Swivel Coupler

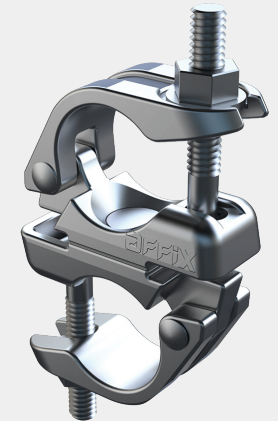
Model No. FCF09

Forged swivel coupler by Affix, used for connecting two 48.3mm tubes at any angle. This fitting is designed for use in all types of scaffolding construction, most often employed where diagonal bracing is required and also in lighting rigs, staging and guard rails.

All the forged scaffold fittings are zinc plated for longer life. Manufactured to **BS 1139 (Part 2) & EN 74** and are tested to ensure the highest level of quality control.

This fitting is also available as a pressed steel fitting.

Suitable Pipe	48.3mm OD
Standards	EN74-A
Weight	1.074 Kg
Finishing	Zinc Plated



Single Coupler

Model No. FCF10

Forged single coupler by Affix, connects two 48.3mm tubes at right angles. This fitting is designed for connecting board’s supports (transoms) or putlogs to ledgers in scaffolding and also used in lighting rigs, staging scaffolds. This fitting is not designed for load bearing- use, a double coupler, if that is what you need.

All of our drop forged scaffold fittings are zinc plated for longer life, manufactured to **BS 1139 (Part 2) & EN 74** and tested to ensure the highest level of quality control.

This fitting is also available as a pressed steel fitting.

Suitable Pipe	48.3mm OD
Standards	BS1139
Weight	0.626 Kg
Finishing	Zinc Plated



Girder Coupler

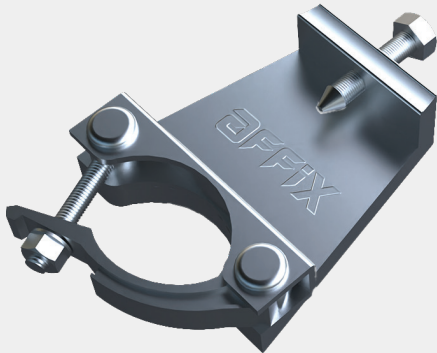
Model No. FCF11

Forged Girder coupler by Affix, this scaffolding fitting is used in pairs to connect a 48.3mm scaffold tube to an “I” beam. This fitting is also known as a Gravlok coupler. These fittings are also known as Beam Clamp.

All of our drop forged fitting are zinc plated for longer life, manufactured to **BS 1139 (Part 2) & EN 74** and tested to ensure the highest level of quality control.

This fitting is also available as a pressed steel fitting.

Suitable Pipe	48.3mm OD
Standards	BS 1139 & EN 74
Weight	1.536 Kg
Finishing	Zinc Plated



Board Retaining Coupler

Model No. FCF12

Board Retaining coupler by Affix, used for securing scaffolding boards to a platform or holding toe boards in place on a deck. This fitting is designed for use in all types of scaffolding applications where scaffold boards need to be secured.

All of our scaffolding fitting is zinc plated for longer life, manufactured to **BS 1139 (Part 2) & EN 74** and tested to ensure the highest level of quality control.

Suitable Pipe	48.3mm OD
Standards	BS 1139 & EN 74
Weight	0.556 Kg
Finishing	Zinc Plated



Named Double Couplers (With Color Code Caps)

Model No. FCF13

A fixed ninety-degree, rigid coupler by Affix, used for connecting two 48.3mm tubes at right angles. This heavy duty fitting is designed for use in all types of scaffolding construction and also in lighting rigs, staging and guard rails.

All the drop forged scaffold fittings are zinc plated and the both caps are two different paint coded for with Names, manufactured to **BS 1139 (Part 2) & EN 74** and are tested to ensure the highest level of quality control. Our drop forged doubles are Class B.

Suitable Pipe	48.3mm OD
Standards	EN 74
Finishing	Zinc Plated



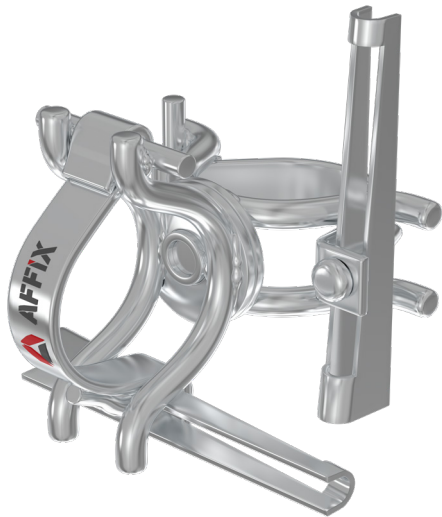
Wedge Swivel Coupler

Model No. FCF14

There are two types of swivel wedge clamps: tube to tube and tube to frame. With swivel clamps, you may create bespoke angles for an infinite number of projects and ideas. The wedge fastening technology has been shown by the industry to offer quick, safe connections while lowering the cost of erection and disassembly.

Hot-dipped galvanization gives swivel wedge clamps a long lifespan and ensures durability by preventing rust and corrosion.

Suitable Pipe	48.3mm OD
Standards	EN 74
Finishing	Zinc Plated



Wired Right Angle Coupler

Model No. FCF15

There are countless uses for the Tube to Tube Right-Angle Wedge coupler, including connecting two ring system towers and serving as an odd-sized ledger.

Suitable Pipe	48.3mm OD
Standards	EN 74
Finishing	Zinc Plated



Half Coupler

Model No. FCF16

The half swivel coupler, check coupler, or single coupler are other names for the forged scaffold half coupler. It is the drop-forged dual swivel coupler's half.

The scaffold toe board coupler with hook, Jordan couplers, etc., can be formed by joining it with bolts and nuts, eye bolts, and long pins.

Both zinc-plated and hot dip galvanized scaffold half couplers are available from us for anti-corrosion applications.

Suitable Pipe	48.3mm OD
Standards	EN 74
Finishing	Zinc Plated



Half Coupler With Pin

Model No. FCF17

When it comes to securely coupling scaffold tubes to scaffolding frames, the Half Coupler with Pin provides a solution that is both dependable and simple to use. This ensures that the scaffolding frames are strong and stable in any construction scenario.

Suitable Pipe	48.3mm OD
Standards	EN 74
Finishing	Zinc Plated

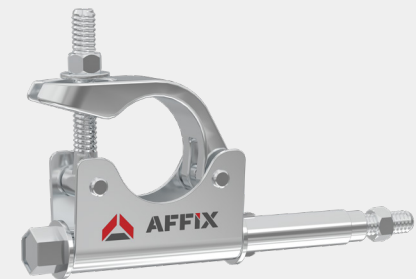


Supa Tie Coupler

Model No. FCF20

A scaffold tube is fastened perpendicular to a structure using a scaffolding SUPA tie. When combined with our M16 Drop in Anchor, the EN74 Standard Scaffold fitting offers a secure and adaptable scaffold tie.

Suitable Pipe	48.3mm OD
Standards	EN 74
Finishing	Zinc Plated

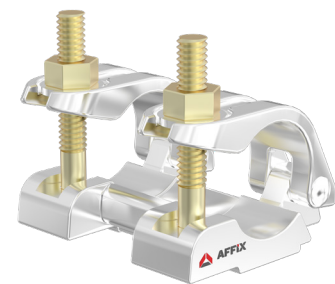


Sleeve Coupler Forged

Model No. FCF21

The forged sleeve coupler provides robust, dependable connections in scaffolding systems, ensuring both security and durability on any project site.

Suitable Pipe	48.3mm OD
Standards	EN 74
Finishing	Zinc Plated



Spigot Adapter Clamp

Model No. FCF22

Ringlock spigot adapter clamps are also known as scaffold spigot adaptors, ringlock support spigot clamps, spigot couplers, or ringlock joint pin couplers. The product contains one ringlock spigot and one standard 48.3mm scaffold tube welded with a forged half scaffolding clamp. A series of bolts and nuts hold the spigot coupling and coupler tube together.

Suitable Pipe	48.3mm OD
Standards	EN 74
Finishing	Zinc Plated



Twin WedgeCoupler

Model No. FCF23

A twin wedge coupler is a ringlock scaffolding system accessory that connects and secures two neighboring ringlock scaffold standards in the ring system configuration. The twin wedge coupler, sometimes referred to as a twin wedge head clamp or a ringlock ledger-to-ledger coupler, is constructed of cast steel and has two wedge locking pins.



Rossete Clamp

Model No. FCF24

The scaffold rosette clamps are made up of four accessories: two half rosettes, one set of bolts and nuts, and one rivet. When open, they may fit around any OD48.3mm standard scaffold tube. Finally, tighten the bolts and nuts to secure the scaffold rosette clamp to the scaffold tube. The scaffold rosette clamps have six holes, allowing for six different connection directions in the ring system scaffold assembly.



Toggle Pin

Model No. FCF25

Scaffolding Toggle Pins are required to secure scaffold frames and accessories together. Frames, posts, casters, and any other attachable component are designed to be secured together with scaffolding toggle pins or spring clips.



Internal Tie Coupler

Model No. FCF26

Suitable Pipe	48.3mm OD
Standards	EN 74
Finishing	Zinc Plated



Roofing Coupler

Model No. FCF27

Scaffold Roofing Couplers are used to attach CI Sheets (also known as Wrigley tin/corrugated sheets) to scaffold tube while building a temporary or semi-permanent roof structure with scaffolding tube and scaffold couplers.

Suitable Pipe	48.3mm OD
Standards	EN 74
Finishing	Zinc Plated



Ladder Coupler (Double Sided)

Model No. FCF28

Forged scaffold ladder clamps are a type of scaffolding ladder clamp that can withstand large loads. It is equipped with forged scaffold covers and pressed bases. In construction, the scaffold cover surrounds the OD48.3mm scaffold tubes, while the pressed base component secures the scaffold ladders to the scaffold tubes.

Suitable Pipe	48.3mm OD
Standards	EN 74
Finishing	Zinc Plated



Ladder Coupler (Double Sided With Square Edge)

Model No. FCF29

The double-sided scaffold ladder clamps are pressed kind. Scaffold ladders should be secured in pairs to the scaffold and scaffold tubes. The circular edge clamp or ladder clamp is double-sided. Scaffold ladder clamps serve as an access system for construction and building scaffolding.

Suitable Pipe	48.3mm OD
Standards	EN 74
Finishing	Zinc Plated



Tripods For Props

Model No. FCF30

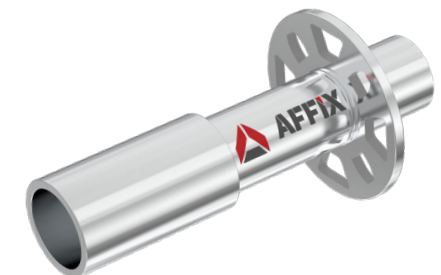
Scaffold Tripods are custom designed to fit your scaffolding props' dimensions and diameter. The Tripod Scaffolding Steel Material Grade is tested in accordance with the BS EN Standard.



Base Collar

Model No. FCF31

The base collar, also known as a starter in the ringlock system, comes in various sizes from 240mm to 410mm. Choose the appropriate size for your construction or staging needs.



At **AFFIX**, our certified Quality Management System guarantees products are consistently rated higher in performance and value by the industry. This has been possible only because of our stringent quality control procedures. This assures our customers that our products have been inspected and/or tested to comply with strict **EN standards** for different products.

AFFIX is **EN 1004-1:2020** certified for its **Mobile Scaffolding** range of products. This Quality standard defines what materials, dimensions, design loads, safety and performance requirements mobile access towers should confirm to.

AFFIX is **BS 1139-6:2014** certified for its **Cantilever, Bridgeway and Stair Tower** range of products. This Quality standard specifies requirements for the structural design of prefabricated tower scaffolds utilizing components from mobile access and working towers specified in **EN 1004** but in configurations that are outside of the scope of that standard.

AFFIX is **BS 8620:2016** certified for its **Podium Steps** range of products. This Quality standard specifies requirements for an Low Level Work Platform with one working platform with side protection, for use by one person, with a maximum working platform height not greater than 2.5 m. The maximum working load of the LLWP is 150 kg.



AFFIX is EN 131 certified for its Portable Steps and Ladders range of products. This Quality standard is a European committee for standardisation (CEN) harmonised standard for portable steps and ladders, manufactured from metal and certain other materials such as GRP.

AFFIX is EN 74 certified for it's Couplers range of products. This Quality standard applies to scaffolding couplers only. It is used mostly for Double couplers, Swivel couplers and Sleeve couplers. This standard defines the requirement on Slip, Distortion and Other Characters to ensure safety of the product.

AFFIX is EN 12810-1:2003 and EN 12811-1:2003 certified for it's Cup-lock Scaffolding Components range of products. These Quality standards specifies the performance requirements, the general requirements for the structural design and assessment of prefabricated facade scaffold system and the methods of structural and general design for access and working scaffolds.



AFFIX is a Manufacturing Member of PASMA and the. This association is the recognised body and authority for mobile access towers. PASMA advances safety, standards and best practices across a wide range of sectors and represents the interests of its members in the UK, South Africa, South East Asia and the Middle East. We feel privileged to be associated with PASMA and helping them to advance safety and standards in the mobile access tower industry



AFFIX is also a Manufacturing Member of The Ladder Association and the member category is “Manufacturer; Supplier”. We feel privileged to be associated with The Ladder Association and helping to progress safety and best practice step by step. As a member of the association, AFFIX is not only supposed to demonstrate compliance with ladder safety standards but we are also expected to provide inputs into the creation of those standards.



AFFIX is ISO 9001:2015 certified. These quality management standards, maintained by the International Organization of Standardization(ISO), provides a number of business process requirements for consistent product manufacturing and delivery to meet customer’s expectations.





AFFIX

Finland

Affix Scaffolding Europe Oy

✉ info@affixscaffolding.eu

🌐 www.affixscaffolding.eu

Estonia

Affixscaffolding Europe Ou

✉ info@affixscaffolding.eu

🌐 www.affixscaffolding.eu

India

Affix Scaffolding India Pvt Ltd.

✉ info@affixscaffold.com

🌐 www.affixscaffold.com

Qatar

Affix Scaffolding WLL

✉ info@affixscaffolding.com

🌐 www.affixscaffolding.com

Saudi Arabia

Affix Gulf Scaffolding Manufacturing LLC

✉ info@affixksa.com

🌐 www.affixksa.com

To know more

